



**HALL** **BMU**

OFF-LOCATION IN BERLIN  
**FACTSHEET**

Sportfliegerstraße 6, D-12487 Berlin  
Phone: +49 (0) 30-53 60 722 0

Mail: [info@bmu-event.de](mailto:info@bmu-event.de)  
Web: [www.bmu-vt.de](http://www.bmu-vt.de)

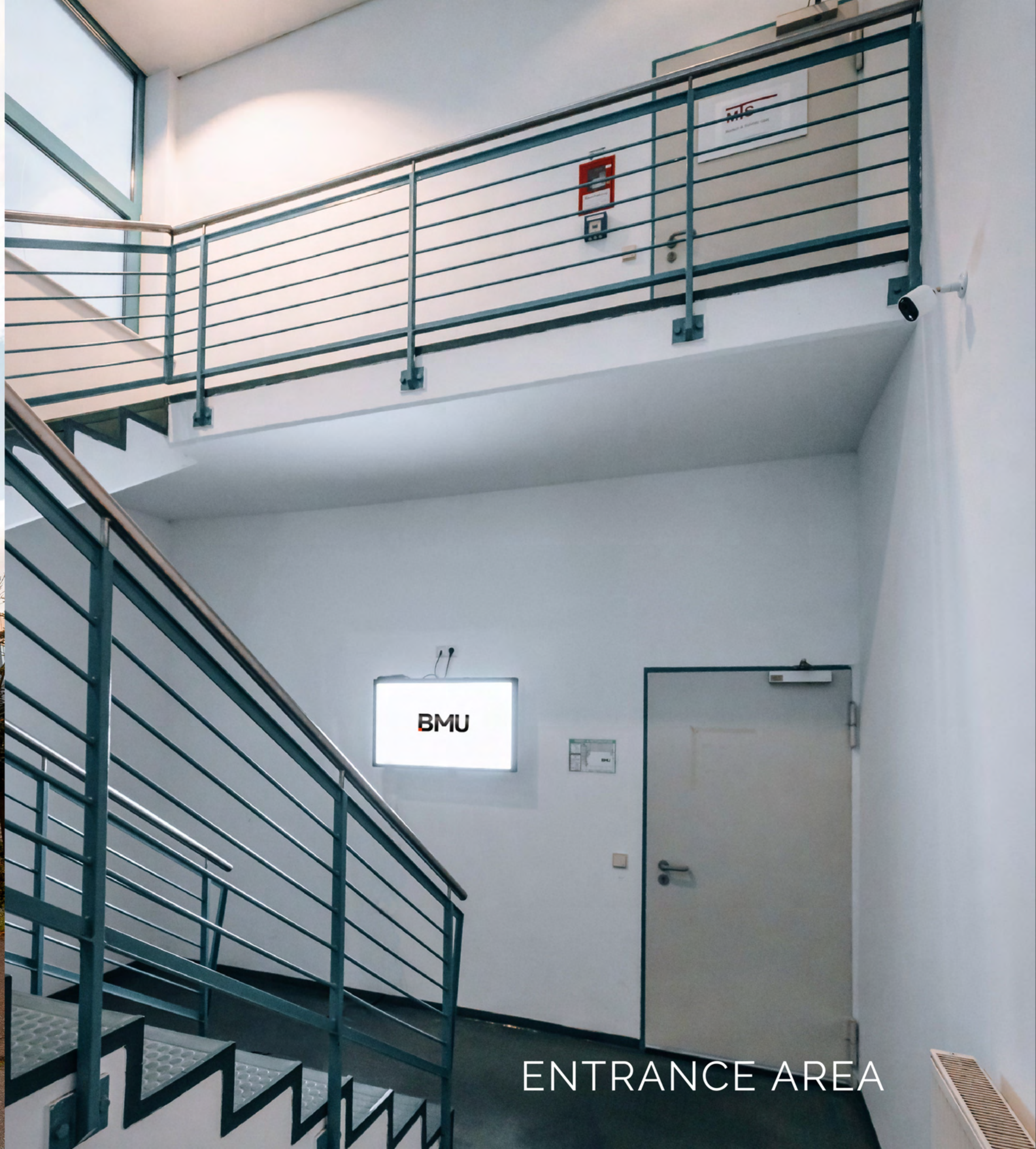


## KEYFACTS

- 800 m<sup>2</sup> total area, including 350 m<sup>2</sup> studio / production & rehearsal hall
- over 6.5 m clear height
- studio / production & rehearsal hall covered on the sides with black molleton (rollable), complete darkening possible
- ceiling load up to 200 kg per m<sup>2</sup>, numerous suspension points available
- sealed floor with a load capacity of up to 2,500 kg per m<sup>2</sup>
- power connections available (3x 16A CEE, 5xA 32CEE, 4x 63A CEE)
- separate internet access with WLAN available (100 MBit/s download / 40 MBit/s upload), dedicated line possible (300/300)
- 5 production and baking rooms, each approx. 20-40 m<sup>2</sup> (partially air-conditioned)
- numerous toilets and showers
- hot and cold water available
- fully functional kitchen available
- studio and adjoining rooms can be heated
- roller shutter access at ground level
- parking available on request and for a fee (€10 per vehicle)
- direct connection to the BMU Veranstaltungstechnik warehouse, therefore access to stage, sound, lighting and video technology possible
- exclusive special contingents for BMU customers at the IBB Blue Hotel Airport Berlin



EXTERIOR VIEW



ENTRANCE AREA





INTERIOR VIEW STUDIO



BACKOFFICE | 1ST FLOOR



CONFERENCE ROOM | 1ST FLOOR



LOUNGE AREA | STUDIO

HALL **BMU**



BACKOFFICE STUDIO | GROUND FLOOR



BACKOFFICE STUDIO | GROUND FLOOR

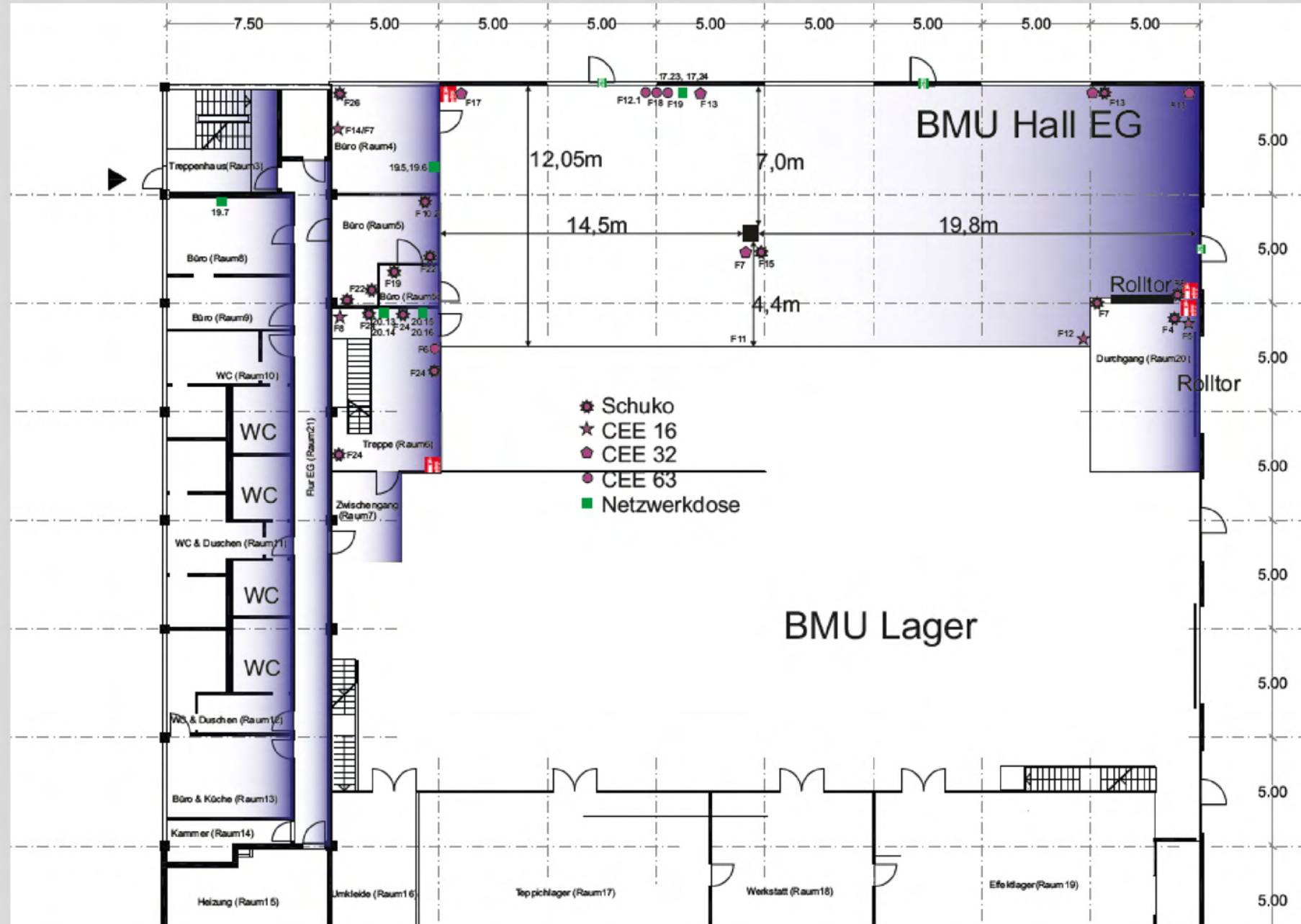




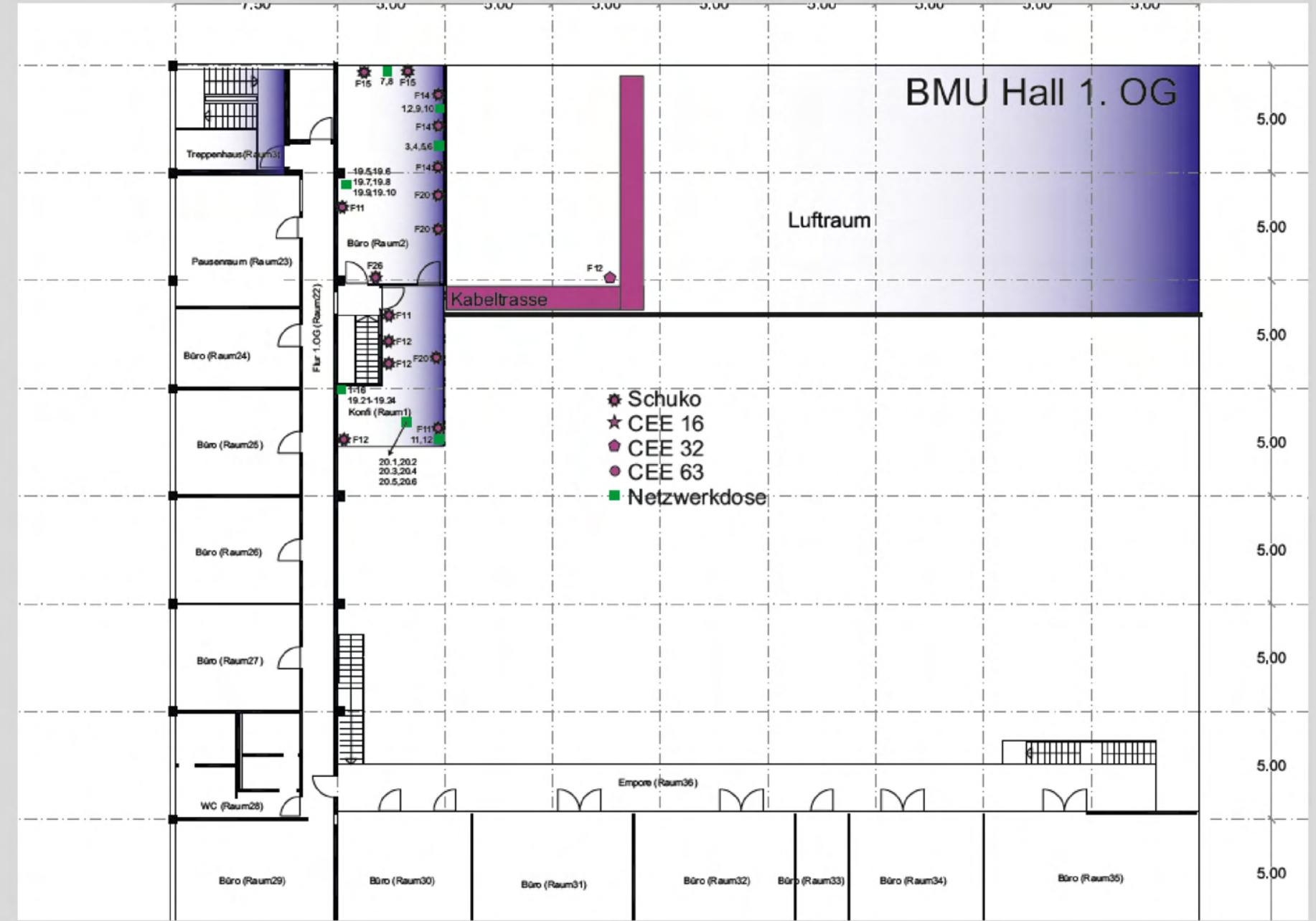
BACKOFFICE 1 | GROUND FLOOR



BACKOFFICE 2 | GROUND FLOOR



FLOOR PLAN | GROUND FLOOR



FLOOR PLAN | 1ST FLOOR



## KEYFACTS

### BMU Hall (Location)

- exclusive use of the BMU Hall: **1,500.00 EUR net / day**
- set-up and dismantling day: **750.00 EUR net / day**

### Personnel | Event support

- set-up and dismantling support 1 person / 8 hours: **560.00 EUR net**
- event support 1 person / 8 hours: **560.00 EUR net**

### Cleaning fee

- final cleaning of entire area: **590.00 EUR net**  
for heavy soiling: min. 50% surcharge on cleaning flat rate
- Intermediate cleaning, hall and sanitary facilities: according to extent and degree of soiling
- WC service 1 person / per hour: **35.00 EUR net**

### Other charges

- electricity, according to consumption / per kWh: **0.50 EUR net**
- heating, according to consumption / per kWh: **0.50 EUR net**
- waste disposal / per m<sup>3</sup>: **40.00 EUR net**

### BMU Hall - Event organizer

We will be happy to organize the arrival of your participants and guests for you in the course of renting the BMU Hall. We can arrange overnight accommodation with our cooperation partners or in the hotel of your choice, as well as full catering for the entire rental period.

So you don't have to worry about a thing. Talk to us about it.



## NICE TO KNOW

BMU Veranstaltungstechnik is the exclusive technical supplier and service provider of BMU Hall. However, it is possible to pay a lump sum of 2,500.00 EUR net. This enables the client to make use of an external service provider.

Special discount (longer rental period)

As a gesture of goodwill and without acknowledging any legal obligation, you will receive a special discount on the pure studio rental (net price) and on the basis of the following discount scale if you use the rental rooms for a longer period and the technical equipment (incl. staff) via BMU Veranstaltungstechnik:

- Studio rental period from 1 week = 5%
- Studio rental period from 2 weeks = 10%
- Studio rental period from 3 weeks = 15%
- Studio rental period from 4 weeks = 20%

### Staff

Insofar as the client does not purchase any technical equipment, including its support, from the contractor, a set-up/dismantling and event support service shall be provided in addition to the studio rental and charged per rental day.



**BMU HALL**  
**VOUCHER**



## OVERNIGHT STAY - IBB HOTEL BERLIN-AIRPORT

Groß-Berliner-Damm 71 | D-12487 Berlin

The IBB Blue Hotel, which is only 150 meters away, offers discounted corporate rates when booking the event hall. Please contact us.

### Hotel

- Berlin Adlershof directly on Groß-Berliner-Damm
- next to the Adlershof Technology Park and the Adlershof Media Park
- 13 km from BER airport

### Rooms

- 67 Standard Standard rooms
- 15 Standard Plus rooms
- 2 Superior rooms
- all rooms with shower, hairdryer and satellite TV

### Restaurant

- Bistro and restaurant with terrace

### Services

- 24-hour reception with express and online check-in and check-out
- WLAN in every room and all freely accessible areas
- parking lot with 40 spaces
- 24h hotel store
- laundry service

**HALL**  
**BMU**



BERLIN

# HALL BMU

## **Address**

Bmusik Veranstaltungstechnik GmbH & Co KG  
department Event | BMU Hall  
Sportfliegerstr. 6  
D- 12487 Berlin

## **Contact:**

Mail: [info@bmu-event.de](mailto:info@bmu-event.de)  
Web: [www.bmu-vt.de](http://www.bmu-vt.de)  
Phone: +49 (0) 30-53 60 722 60

## **Appointments**

We look forward to welcoming you to our BMU Hall. If you would like to get a first personal impression of the BMU Hall and all its advantages and special features, please contact us.

We will then discuss your project, your wishes and the possibilities together.

## **SEE YOU SOON....**

Your BMU Hall Team